



3D Mammography

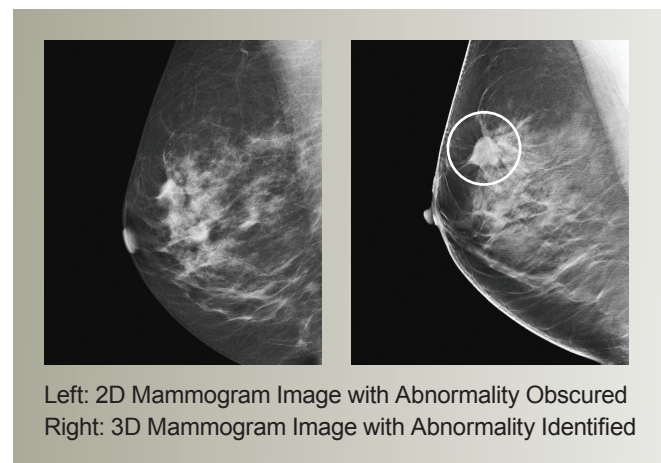
What is three-dimensional (3D) mammography?

3D mammography, also referred to as Digital Breast Tomosynthesis (DBT) or tomo, is one of the latest technological innovations in women's healthcare. It enables images of the whole breast to be taken in slices, and then reconstructed in 3D. This helps to enable doctors to see all around and between the breast tissues to help perform an accurate analysis and search for possible abnormalities.

A 3D mammography exam is similar to a standard mammogram. The main difference is that during the scan, the X-ray tube will move to capture multiple images of the breast from different angles. 3D mammography is performed with the same level of compression and takes approximately the same amount of time as a regular 2D mammogram.

Why do I need 3D mammography?

You are receiving this test to help obtain the answers your physician needs to make a more confident diagnosis and determine the next steps in your care. Digital mammography is evolving from 2D to 3D breast imaging. This new technology helps clinicians see behind normal breast tissue where abnormalities could hide in 2D images and between overlapping breast tissues.



Left: 2D Mammogram Image with Abnormality Obscured
Right: 3D Mammogram Image with Abnormality Identified

If you have more questions about 3D mammography, talk to your physician today.



Lake Medical Imaging

Accredited by the American College of Radiology



This material was created by GE Healthcare to support patients in understanding breast imaging techniques.

Why is 3D mammography right for me?

Lake Medical Imaging selected GE Healthcare's SenoClaire technology to deliver 3D mammograms on our patients because it provides excellent image quality while the radiation dose is equivalent to the dose delivered in a traditional 2D mammogram.²

SenoClaire™ Digital Breast Tomosynthesis from GE Healthcare.

Lake Medical Imaging believes that every patient deserves the very best care, and offering 3D mammography helps our physicians provide more accurate screening and diagnoses.

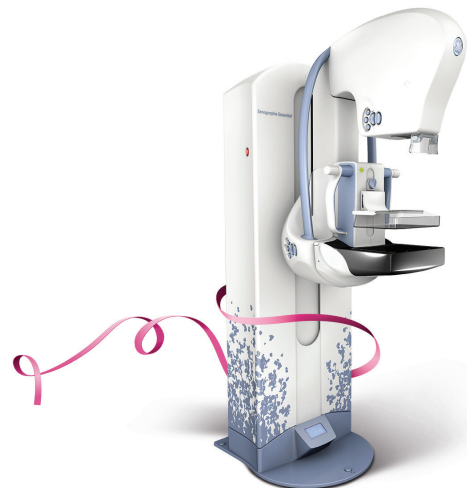
SenoClaire Digital Breast Tomosynthesis provides physicians with clear 3D breast images in multiple slices so that they can view breast tissue in layers, look between overlapping tissue, and identify abnormalities.

SenoClaire is a component of GE Healthcare's adaptable portfolio of technologies and services designed to help detect disease earlier, provide more confident diagnoses and create personalized treatment plans...for every woman.

About Lake Medical Imaging

Our fully accredited women's centers offer a complete range of breast imaging, needle core breast biopsy, ultrasound and other imaging technologies. Each of our Radiologists is board certified by the American Board of Radiology and has formal training in mammography. In fact, each of our women's imaging centers is fully accredited and has been designated a Breast Imaging Center of Excellence by the American College of Radiology. The quality of our physicians, personnel and technology has exceeded the ACR's standards for patient care and safety.

**For more information call (352) 787-5858
or visit www.lakemedicalimaging.com**



¹"Comparison of Tomosynthesis Plus Digital Mammography Alone for Breast Cancer Screening." Collaborating with Drs. Haas and Philpotts were Vivek Kalra, M.D., Jamie Geisel, M.D., Madhavi Raghu, M.D., and Melissa Durand, M.D. Radiology July 2013.

²3D mammography can be used with most women and for any type of breast tissue.

